



Information about WGCV Planning Meeting Radebeul (Germany), February 24-25, 2015

Albrecht von Barga (Chair)

DLR

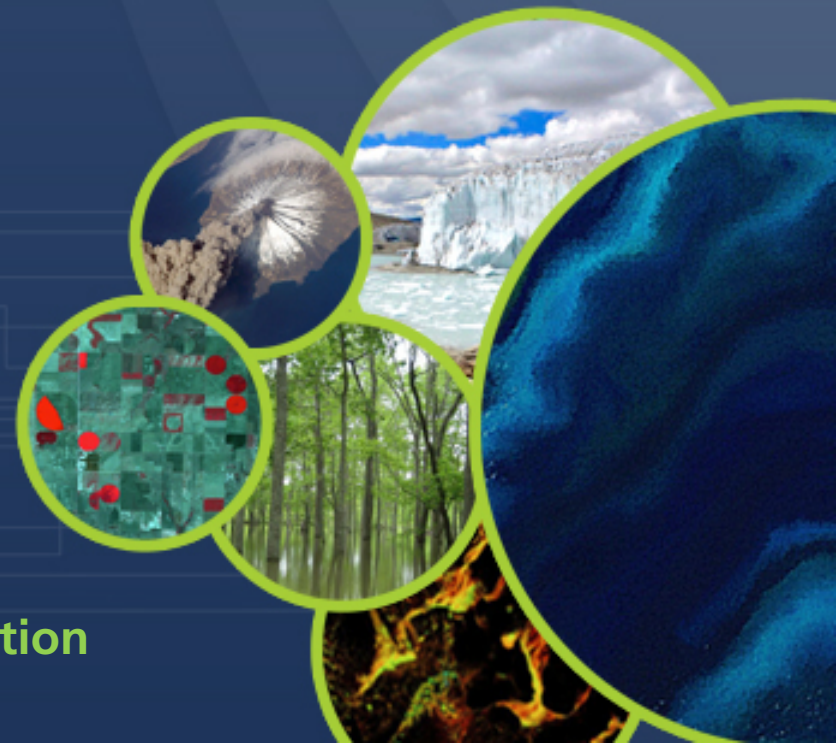
Agenda Item WGCV Planning Workshop

CEOS-WGCV Plenary # 39

Berlin (Germany)

May 6 - 8, 2015

Working Group on Calibration and Validation





Specific WGCV Planning Meeting Mission

To identify a road map considering boundary conditions for finding a most suitable recommendation how to make usage of

- Digital Elevation Models (DEMs)
- Cloud masking
- Atmospheric correction

in Earth Observation applications.

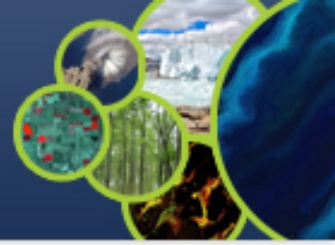
Most likely target: Recommendations shall be „inclusive“.



Great Picture

We are acting within CEOS which means we have to recapitulate

- Work plan for CEOS since 2014 with rolling update at the beginning of each year
- Work plan of CEOS WGCV
- Cooperation within WGCV between sub-groups or cross-cutting
- Cooperation with CEOS Working Groups and Virtual Constellations
- Cooperation with other institutional organizations, e.g. GEO -> GEOSS context
(GEO Community of Practice)
- Best Effort



General Meeting Mission

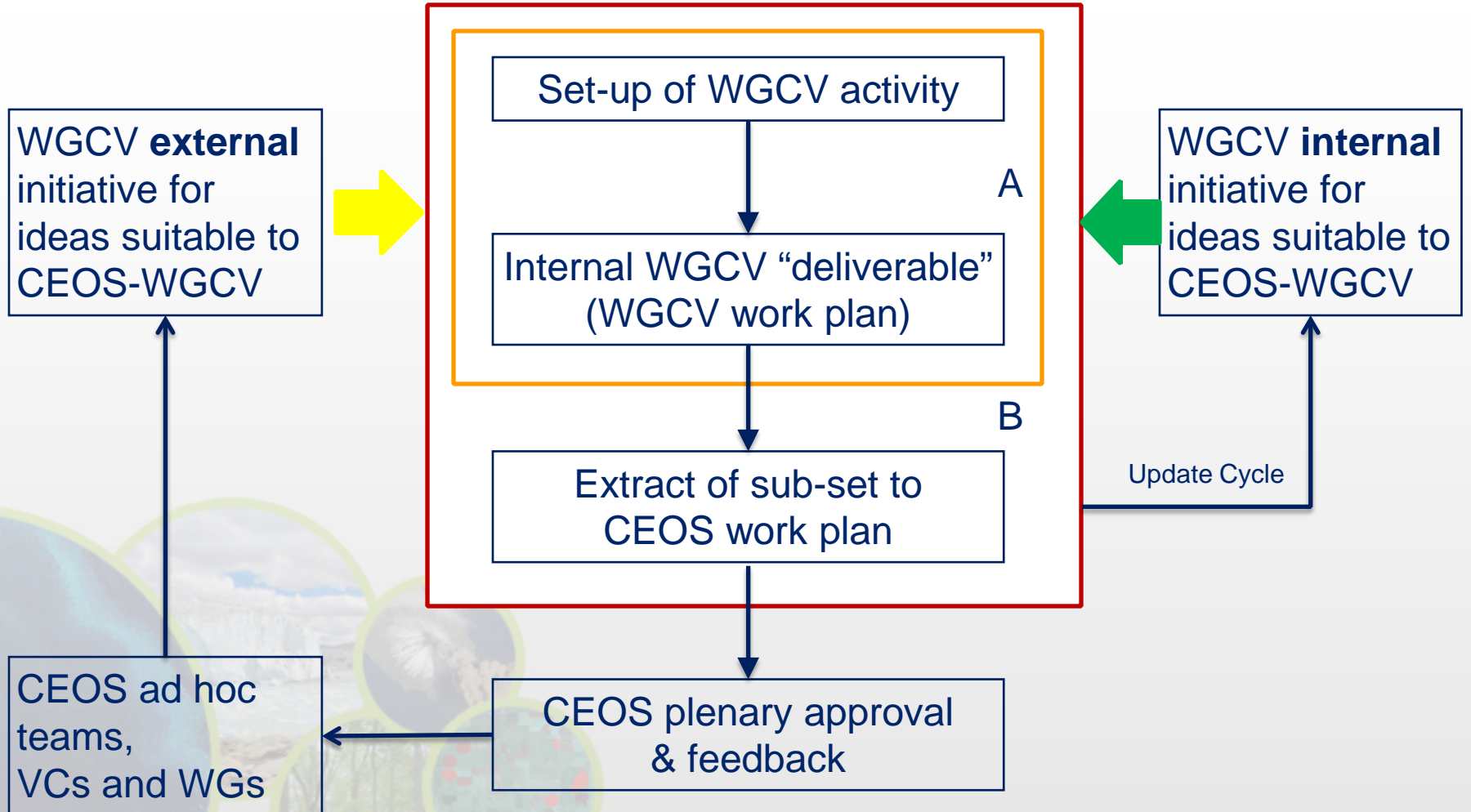
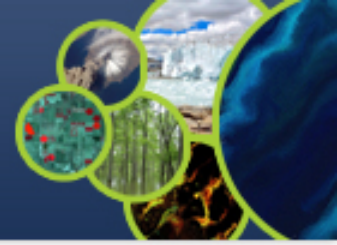
Box A

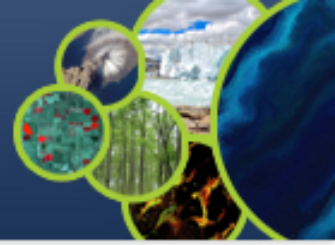
Identification of a generalized mechanism for the set-up of (concrete project-like) activities to be included in an internal work plan with a minimum formalism.

See also: Presentation by Jörg Schulz (EUMETSAT) about SCOPE-CM etc.....

Box B

Identification of a generalized mechanism to feed CEOS-WGCV deliverables into the yearly update of the CEOS work plan synchronized to our plenary meeting rhythm.

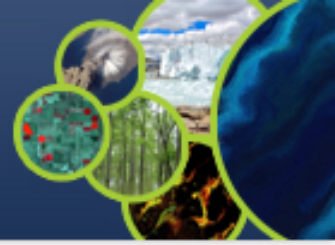




Some home work for sub-group leads

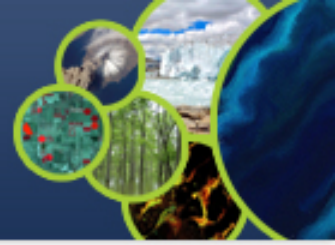
Please think about

1. Reorganization of WGCV work plan into “Terms of References” and (internal) Work Plan.
2. ToR includes all, WGCV and sub-groups
3. Work plan is organized a small excel listing / database including deliverables
4. Rolling update keeps WGCV informed
5. WGCV work plan as base input for CEOS work plan (extract!)
6. How to feed into WGCV work plan initiatives from other (CEOS, GEO) entities



Draft of a Task Approach





What is our approach in WGCV to set up an activity / task

- Observation: activities mostly cross-cutting or from interest over several sub-groups but also different WGs and VCs
- Need to define clear tasks => „task force approach“
 - Limited set-up in task
 - Limited set-up in time frame (max. 24 months)
 - Task must not be necessarily identified with one sub-group
 - Task lead shall be identified first (which can be also a core team)
 - Task lead need not be member of WGCV but needs support/backing by an agency to express the conjunction to CEOS
- Task shall be first defined in a pre-phase which may/can include a workshop but shall not last longer than one period between two plenaries



What is our approach in WGCV to set up an activity / task

Set-up of task team shall include

- „Go“ by the WGCV
- Pre-phase to elaborate a road map including schedule, milestones, and deliverables; and also possible contributions of the sub-group communities.
- Pre-phase carried out by nominated team lead (core team)
- Road map / implementation plan shall identify also the linkage to the WGs, VCs of CEOS or GEO CoPs if there are any related to
- Road map / implementation plan to be presented to WGCV plenary for „approval“
- Road map / implementation plan can make use of cooperation with other WGs and VCs in carrying out the task.
- Regular reporting
- Recommendation to CEOS with the start of the tasking (latest)
- Funding issues shall be sorted out (mostly) during the pre-phase.