

LSI-VC Update

Thomas Cecere

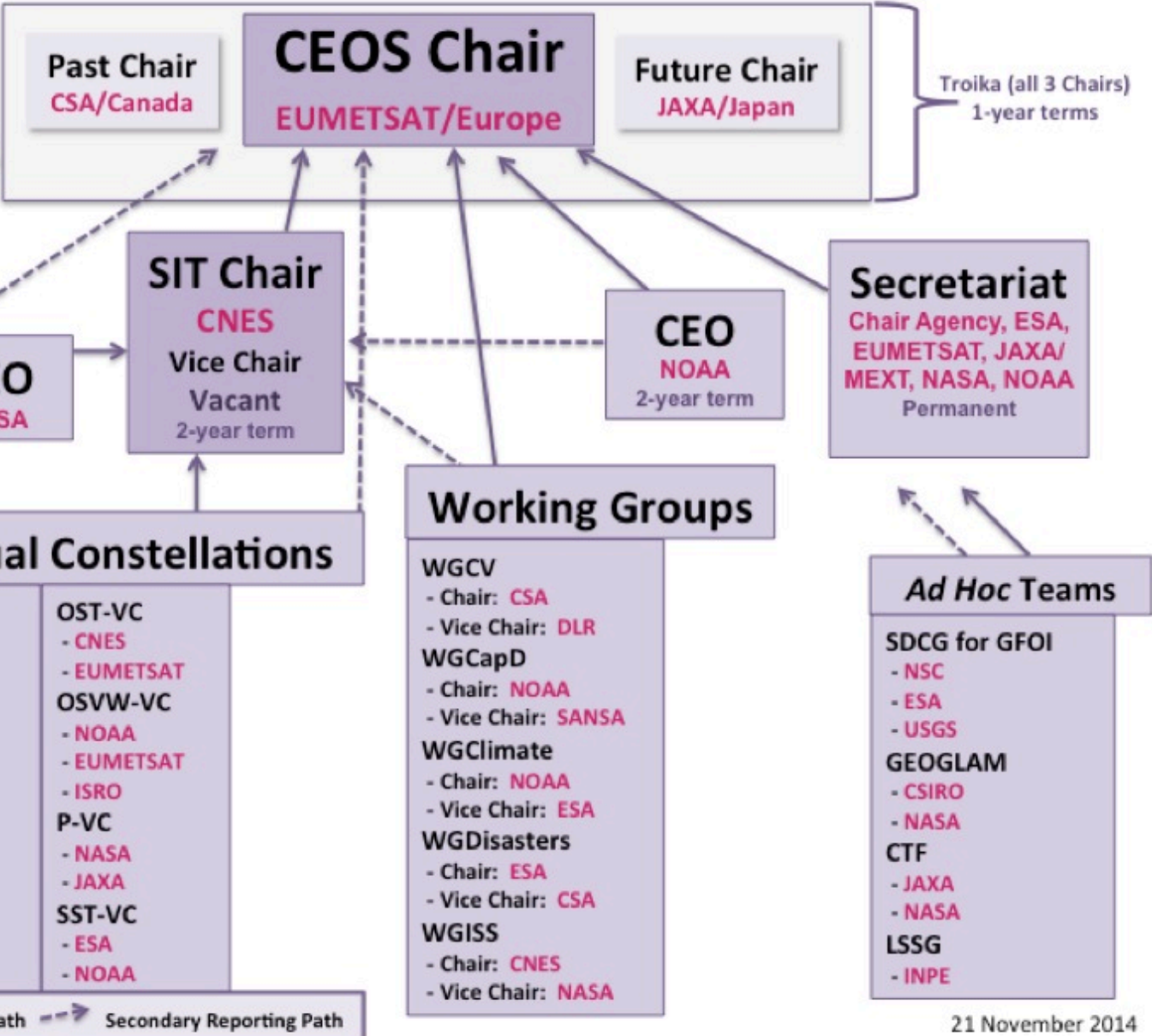
**38th CEOS Working Group on Calibration
and Validation Plenary (WGCV-38)**

1 October 2014





2013-2014



**So ...is there a
problem?**





The Need

Land is important. We all depend on it.

Flexible space assets that can serve many domains across many SBAS are good!

But how do we ensure that:

- Use of assets (satellites, ground stations, communications and data storage) is coordinated and optimised.
- Potentially conflicting acquisition priorities are effectively managed across domains.
- Agency programs are sustainable in the long-term, maximising the likelihood that long-term continuity of data required to deliver current & future societal benefit.
- Users, activities and entities are supported to ensure the data actually get used, addressing real user requirements across a wide variety of domains and promoting and encouraging openness and inclusivity among data providers.

**How can we help the contacts at the space agencies
who are trying to do their best to provide
data to support all the great ideas?**





Options

The following primary options have been identified:

Option	Concept
1	Do nothing (i.e. allow the Land surface imaging VC to dissolve)
2	Land surface imaging VC – end to end
3	Land surface imaging VC – space segment and associated land imaging assets
4	Multiple VCs (optical land, radar land, thermal land)



Top Down Analysis Criteria

- How well are the CEOS objectives supported?
- How much benefit is there likely to be to internal stakeholders?
- How much benefit is there likely to be to external stakeholders?
- Does the approach align with the defined roles of Working Groups and Virtual Constellations?
- Does it address an unmet need in the existing organisational mechanisms?

These criteria were derived from guiding documents.



Bottom Up Analysis Criteria

- Does it address a real and pressing issue that needs action right now?
- Do agencies possess the necessary personnel and fiscal resources to support the initiative?
- Will a critical mass of key agencies support it, and does it provide feasible avenues for other agencies to participate?
- How well does it leverage, and support, existing activities and mechanisms?
- Is there a logical pathway to 'kick off' and 'ramp up' the new initiative?

These criteria were derived from guiding documents.

**... And is there a
solution?**





Can it work?

- Analysis showed a prima facie solution.
- But it was undertaken by a very small group.
- And it is unclear:

Will a critical mass of key agencies support it?

Does it provide feasible avenues for other agencies to participate?



Immediate next steps:

- Finalize Options (**complete**)
- Finalize Top Down and Bottom Up Criteria (**complete**)

Form an evaluation team composed of CEOS internal stakeholders:

- Develop a standard scoring for each identified criteria
 - 1-10 scale tricky
 - Perhaps 'Strong disagree ... to ... Strongly agree'
- Perform an analysis for each option

Results would need to be completed by mid-October and it is proposed that they will be presented at the CEOS Plenary